



BELL INSTITUTE OF TECHNOLOGY  
TEL 0721 992065  
NAIROBI

## **AUTOCAD ELECTRICAL COURSE OUTLINE**

### **Introduction:**

This training is designed for new users who require comprehensive training in AutoCAD® Electrical software. This hands-on courseware focuses on how to build intelligent ladder diagrams and panel layouts, and how to leverage this intelligence. The courseware provides an overview of many AutoCAD Electrical utilities designed to enable users to quickly build and manage electrical-controls drawings. Hands-on exercises throughout the courseware explore how to create electrical-controls production drawings. All exercises and datasets in this courseware are based on the IEC (international) standard.

It is important to know that AutoCAD Electrical is Different a bit with AutoCAD and AutoCAD Electrical has a lot of Schematic Library objects for use and re use and the wire system are so automated. Even the software is called AutoCAD Electrical.

## Course Details

### Autodesk AutoCAD Electrical

<b>Objective</b>	<p>Navigate the AutoCAD Electrical user interface.</p> <p>Use the fundamental features of AutoCAD Electrical.</p> <p>Build intelligent ladder diagrams and panel layouts.</p> <p>Create, view, and edit the project settings and properties.</p> <p>Extract data from drawings into reports formatted to match users' standards.</p> <p>Insert and edit parametric PLC modules, nonparametric PLC modules, and stand- alone PLC I/O points.</p>
<b>Prerequisite</b>	<p>A working knowledge of the AutoCAD® software and electrical terminology, alternatively we take our students on some normal AutoCAD Basic as we proceed to AutoCAD Electrical. You will realize the Difference.</p>

<b>Session 1: Basic Work Flow</b>  Design Environment Basic Workflow Chapter exercise	<b>Session 2: Project Basics</b>  Project Manager Project Drawing List Moving Through a Project Copy Projects Chapter exercise
---	--

### **Session 3: Schematic Wiring**

Ladders  
Wire Type  
Wire Numbers 3-Phase Circuits  
Source and Destination Signal Arrows  
MultiWire 3-Phase Circuits  
Circuits  
Point-2-Point Connectors  
Chapter exercise

### **Session 4: Schematic Editing**

Basic Editing Utilities  
Data Tools  
Resequencing and Retag Drawings  
Chapter exercise

### **Session 5: Schematic Components**

Schematic Symbol Annotation  
Swap/Update Blocks  
Insert a Schematic Component  
Schematic Reports  
Schematic Reports  
Chapter exercise

### **Session 6: Panel Layouts**

Create a Panel Layout from a Schematic List  
Panel Footprints  
Terminal Strip Editor  
Panel Layout Annotation and Reports  
Chapter exercise

### **Session 7: Settings and Configuration**

AutoCAD Electrical Environment  
Project Properties  
Drawing Properties  
Chapter exercise

### **Session 8: Custom Components**

Schematic Symbols  
Icon Menu System  
Chapter exercise

## Session 9: Custom Data

Parts Catalog Database

Pin List Editor

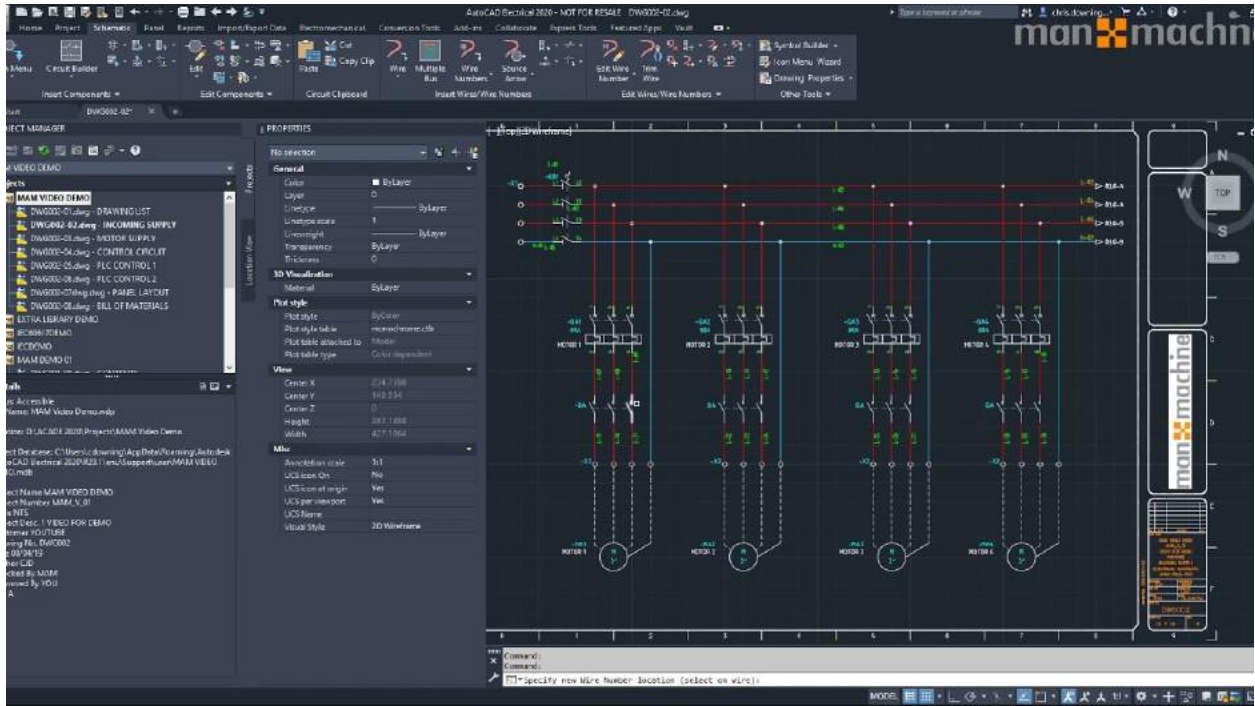
Title Block Update

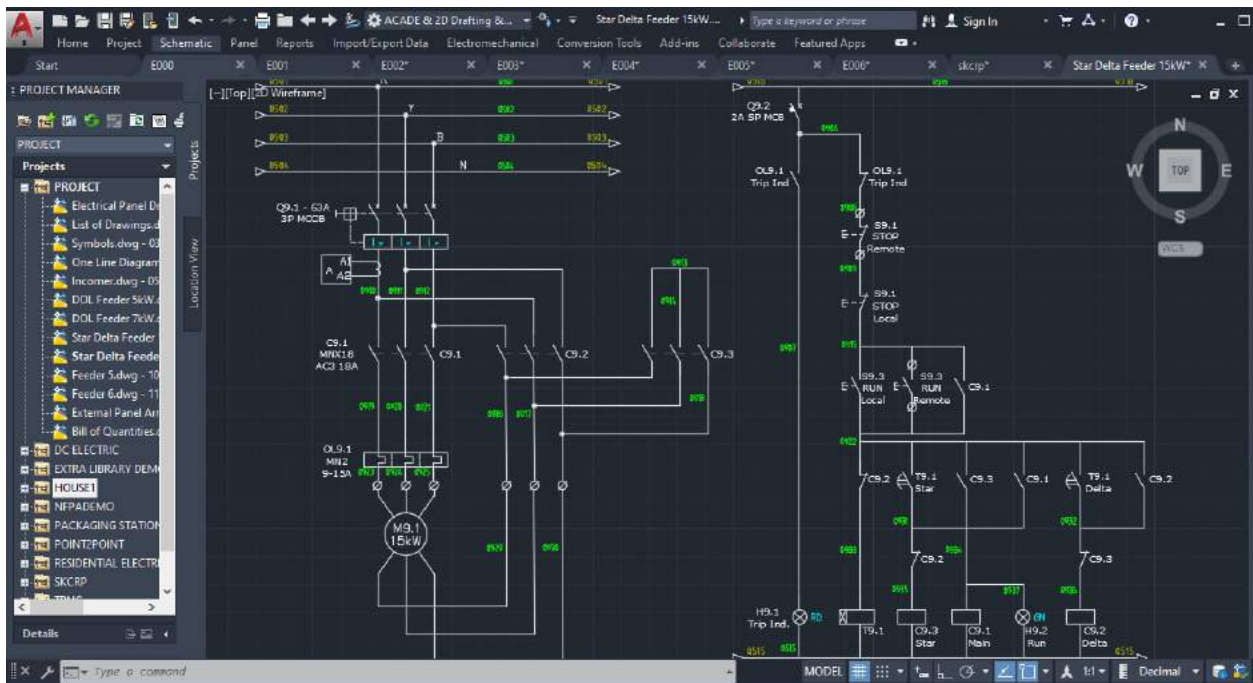
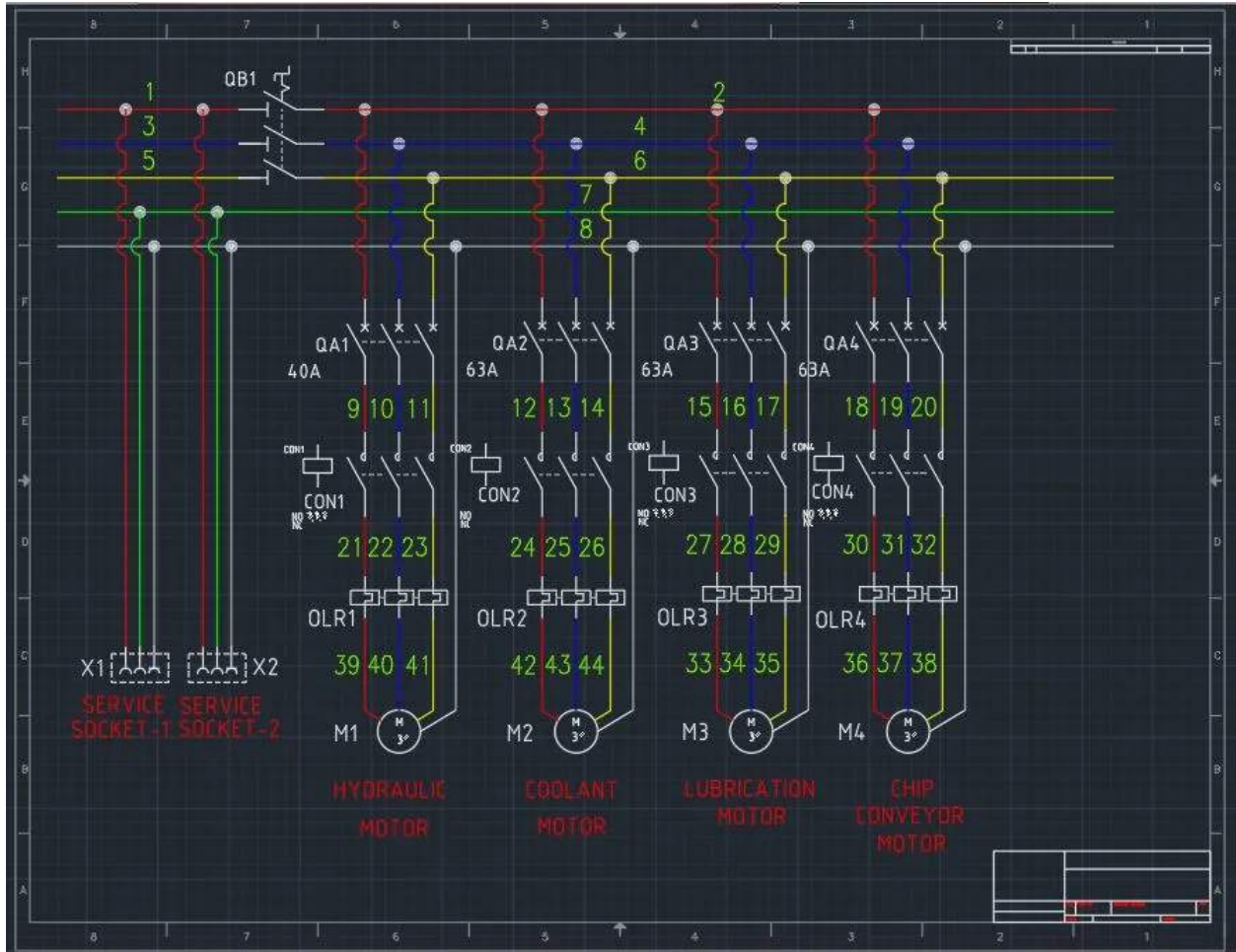
Reference Files

Chapter exercise

Project









# Electrical Plan

